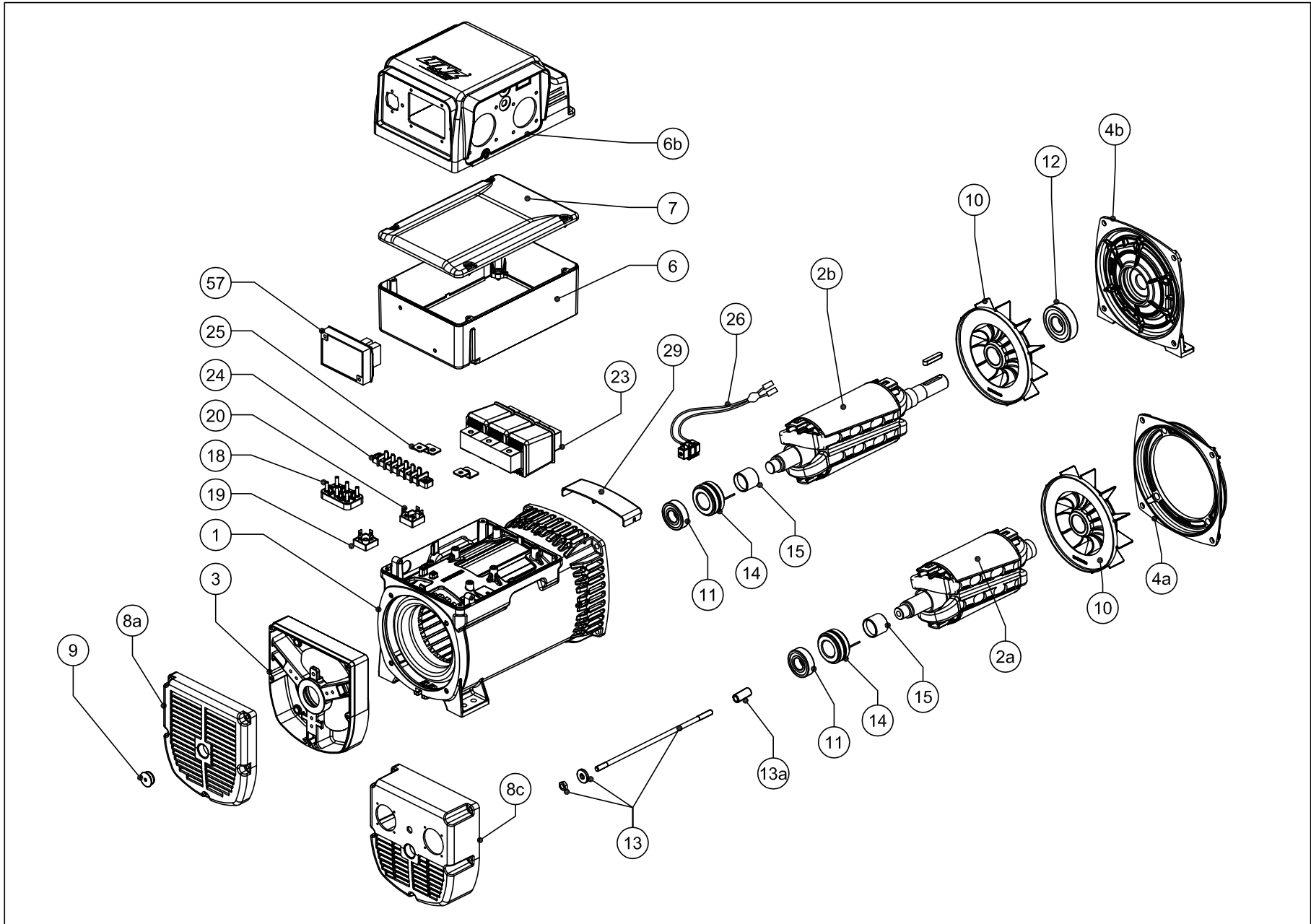


E1S10M KE - E1S10L KE



	LISTA RICAMBI E1S10M-E1S10L KE	SPARE PARTS LIST E1S10M-E1S10L KE	LISTA DE REPUESTOS E1S10M-E1S10L KE	PIECES DETACHEES E1S10M-E1S10L KE
no.	DESCRIZIONE	DESCRIPTION	DESCRIPTION	DESCRIPTION
1	CARCASSA CON STATORE	FRAME WITH STATOR	CARCAZA CON ESTATOR	CARCASSE AVEC STATOR
2	ROTORE FINITO	ROTATING INDUCTOR	INDUCTOR ROTANTE	ROUE POLAIRE
3	SCUDO POSTERIORE	REAR SHIELD	ESCUDO POSTERIOR	FLASQUE ARRIERE
4a	SCUDO ANTERIORE	FRONT SHIELD	ESCUDO ANTERIOR	FLASQUE AVANT
4b	SCUDO ANTERIORE B3/B14	B3/B14 FRONT SHIELD	ESCUDO ANTERIOR B3/B14	FLASQUE AVANT B3/B14
6	SCATOLA BASETTA	TERMINAL BOX	CAJA DE BORNES	BOITE A BORNE
6b	QUADRO SUPERIORE FORATO	DRILLED TOP COVER	TAPA SUPERIOR TRABAJADA	COUVERCLE SUPERIEUR PERCEE
7	COPRISCATOLA	TERMINAL BOX COVER	TAPA CAJA DE BORNES	COUVERCLE BOITE A BORNE
8	CUFFIA POSTERIORE STANDARD	STD.REAR COVER	TAPA POSTERIOR	COIFFE DE PROTECTION ARRIERE
9	TAPPO POSTERIORE	REAR PLUG	TAPON	BOUCHON POSTERIEUR
10	VENTOLA	FAN	VENTILADOR	VENTILATEUR
11	CUSCINETTO POSTERIORE	REAR BEARING	COJINETE POSTERIOR	ROULEMENT ARRIERE
12	CUSCINETTO ANTERIORE	FRONT BEARING	COJINETE ANTERIOR	ROULEMENT AVANT
13	TIRANTE CENTRALE+DADO+RONDELLA	TIE ROD + NUT + WHASER	VARILLA CENTRAL + ARENDELA + TUERCA	TIRANT CENTRAL + RONDELLE + TIGE
14	COLLETTORE A 2 ANELLI d.23	SLIP RING	COLECTOR DE ANILLOS	COLLECTEUR A DEUX BAGUES
15	BUSSOLA ISOLANTE	ISOLATING BUSH	ANILLO AISLADOR	DOUILLE ISOLANTE
18	MORSETTIERA PRINCIPALE 6 PIOLI	6 STUD TERMINAL BOARD	PLACA DE BORNES PRINCIPAL	BORNIER A 6 BORNES
19	PONTE A DIODI MONOFASE	SINGLE PHASE BRIDGE	PUNTE RECTIFICADOR MONOFASICO	PONT REDRESSEUR MONOPHASE
20	PONTE A DIODI TRIFASE	THREE PHASE BRIDGE	PUNTE RECTIFICADOR TRIFASICO	PONT REDRESSEUR TRIPHASE
23	COMPOUND	COMPOUND	COMPOUND	COMPOUND
24	MORSETTIERA AUSILIARIA	AUXILIARY TERMINAL BOARD	BORNERA AUXILIAR	BORNIER AUXILIAIRE
25	SUPPORTI MORSETTIERA	TERMINAL BOARD SUPPORTS	SOPORTES DE BORNERA AUXILIAR	SUPPORTS POUR BORNIER
26	PORTASPAZZOLE COMPLETO	COMPLETE BRUSH HOLDER	PORTAESCOBILLAS COMPLETO	PORTE-BALAIS COMPLET
29	PROTEZIONE SUPERIORE IP21	IP21 TOP PROTECTION	PROTECTION SUPERIOR IP21	PROTECTION SUPERIEUR IP21
57	REGOLATORE ELETTRONICO HVR10 KE	ELECTRONIC REGULATOR HVR10 KE	REGULADOR ELECTRONICO HVR10 KE	REGULATEUR ELECTRONIQUE HVR10 KE

\* Specificare codice dell'alternatore e data di produzione

\* Specify alternator's code and date of production

\* Precisar codigo del alternador y fecha de production

\* Specifier code alternateur et date de production

